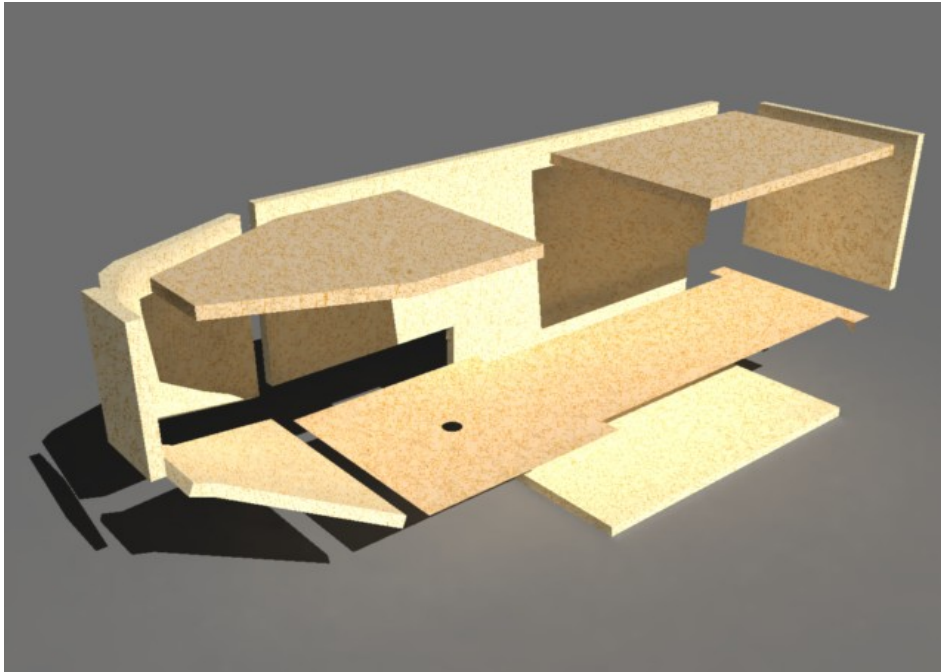


Boom Boat Hull Construction

The basic hull is constructed from 4mm plywood. Precut parts can be provided by contacting Phill or you can do it yourself using the pattern downloaded from this webpage. The precut parts are finger joint cut making assembly similar to a 3 dimensional jigsaw. The downloaded images should be printed on A4 paper. To check no size distortions have occurred in the printing process the image is marked out in 1cm squares. If you wish to change the dimensions a little please feel free but ensure the internal width is no less than 54mm or you will not be able to fit the motor mount.

Once you have a set of hull parts they should be assembled and glued as per the following exploded diagram.



Any small gaps in the joints should be filled with wood filler and then sanded down. Seal the wood with sanding sealer or wood primer then finish with a few coats of paint.

The patterns are as below but it is recommended that the drawing files are downloaded from the website for best quality.

To complete the hull a lead sheet should be fixed to the horizontal base of the keel section and closed cell foam sheeting (I have cut parts from an old camping mat) of approximately 10mm thickness is applied to the front and sides of the hull. The lead sheet gives a low centre of gravity and the self right characteristics while the foam sheeting provides protection when coming along side other boats as well as improving the self righting characteristic still further.

